

Seminar Topics

- Infection Control: the legislation
- Standard & Precautions
 - Hand Hygiene
 - Personal Protective Equipment
- Transmission Based Precautions
- Cleaning, Disinfection and Sterilisation of Equipment and Instrumentation
 - Single Use Vs Re-useable
 - Storage of Sterile Stock
- Environmental Issues
 - Waste
 - Linen
 - Cleaning
- Occupational Exposure

Course Details

The course will be held on 19th April, 2010 and will run for 1 day only between the hours of 08.30 am and 4.30 pm.

The program is subject to change without notice. The subject for each lecture and the names of the lecturers will be provided to students on the first day of the course.

Further Information

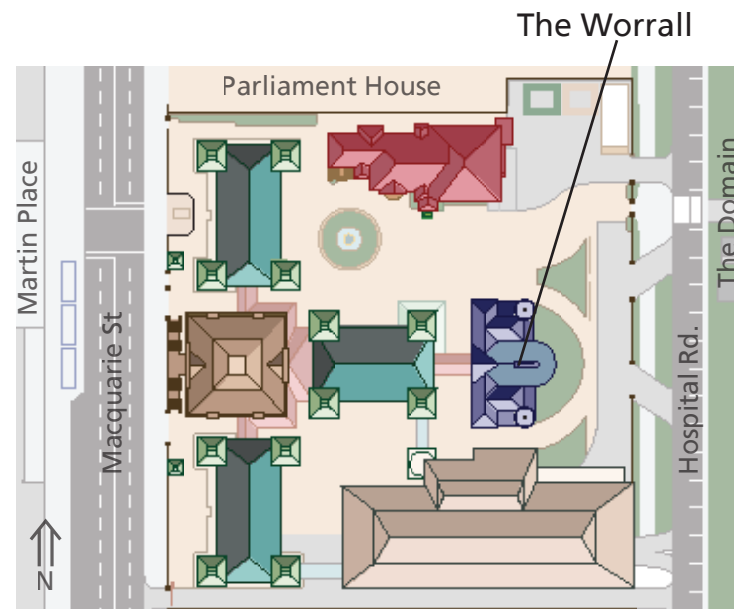
The Course will be held in Sydney Hospital Sydney Eye Hospital's Worrall Lecture Theatre, First Floor, Worrall Block.

The closest train stations to SHSEH are St. James, Martin Place and Wynyard, all of which are a few minutes walk away.

Circular Quay and ferry services are within easy walking distance about three blocks from the hospital.

Buses to many areas of Sydney are within one - four streets of the hospital.

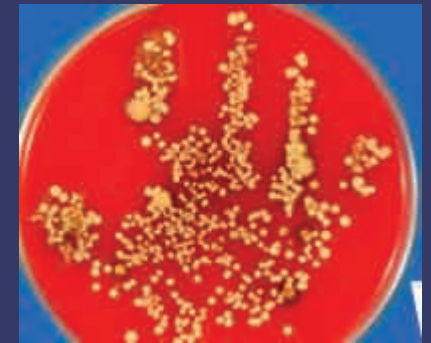
There is also a commercial car park attached to the hospital. For more information on the car park, call: 9223 1166.



Basic Infection Control for Healthcare Professionals

Monday 19th April 2010

0830-1630



Sydney Hospital Sydney Eye Hospital
2010

